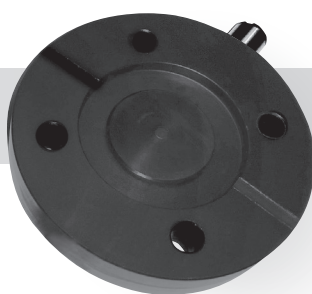


Aria™ Plate Valve

Part Nr. /Ref: CA300-APV



SIMPLICITY and VERSATILITY

The Aria Plate Valve features auto-expulsion function with a push button release. It is appropriate for a variety of prosthetic socket applications where passive suction is indicated. It may be used with or without a sealing sleeve. Unlike valves that are installed into the socket wall, the Aria Plate Valve is attached in line with prosthetic components for a streamline, clean look without the potential for inadvertent damage to the valve as may happen with socket mounted valves. The Aria Plate Valve System includes a universal gasket seal which can be used with all tie in/mounting plates on the market. No need to stock and choose between various sealing kits...one does it all. The Aria Plate Valve is easily serviced and cleaned. Replacement parts are available.

INSTALLATION INSTRUCTIONS

1. Place the enclosed rubber gasket over the proximal side of the Aria Plate Valve, lining up the 4 holes of the gasket with the 4 holes in the plate valve.
2. Place the proximal side of the Aria Plate Valve with gasket up against the Cypress Tie-In Plate or other tie-in/ mounting plate of your choice so that gasket contacts mounting plate and 4-hole pattern is in line with tie-in/mounting plate.
3. Install 4-bolt pattern alignment component of your choice onto the distal end of the Aria Plate Valve using Loctite.



An Extension of Yourself

804 West Bartlett Rd.
Bartlett, IL 60103
info@cypressadaptive.com
www.cypressadaptive.com
888-715-8003
Fax: 888-715-4535



Medidas
Zaagmolen 40
3962 GB Wijk bij Duurstede
Netherlands
medidas@medidas.nl

Rev: 201805-APV-ENG